



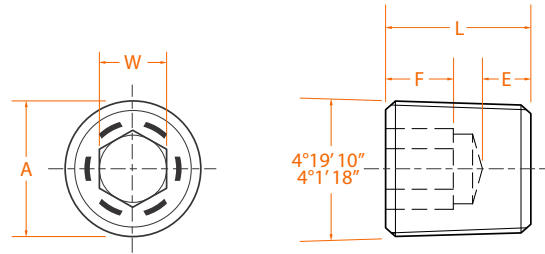
Levl-seal features: controlled 7/8" taper in 3/4" taper hole seats plug level, flush with surface within 1/2 pitch.

Mechanical Properties

1. Material: ASTM A574 alloy steel, austenitic stainless steel or brass.
2. Hardness: Rc 35-40 for steel.
3. DRY-SEAL and LEVL-SEAL: Small end of plug to be flush with face of standard NPTF ring gages within one thread (L1, L2 and tapered ring). Large end of plug to be flush with face of special 7/8 taper ring gages within one-half thread.
4. Undercut in socket at mfrs. option
5. Six equally spaced identification grooves (1/16-27 plug to have 3 identification grooves) on alloy steel plugs. (LEVL-SEAL)
6. Dimensions apply before plating and/or coating.

Notes

- * for taper thread (using tapered reamer)
- ** Maximum for PTFE / Teflon-coated but can be reduced as much as 60% in most applications.



Product Dimensions

Thread size nom	Thread per Inch min	Head Diameter A ref	Hex Socket Size W nom	E min	Length (+0, -.015)		Socket Depth F min
					L max	L min	
1/16	27	.307	.156	.052	.250	.141	
1/8	27	.401	.188	.049	.250	.141	
1/4	18	.529	.250	.045	.406	.266	
3/8	18	.667	.312	.040	.406	.266	
1/2	14	.830	.375	.067	.531	.329	
3/4	14	1.041	.562	.054	.531	.329	
1	11 1/2	1.302	.625	.112	.656	.360	
1 1/4	11 1/2	1.647	.750	.102	.656	.360	
1 1/2	11 1/2	1.885	.750	.102	.656	.360	
2	11 1/2	2.360	1.000	.084	.656	.360	

Thread size nom	tap drill size*	Recommended torque (inch-lbs.) alloy steel**
1/16	15/64	150
1/8	21/64	250
1/4	27/64	600
3/8	9/16	1,200
1/2	11/16	1,800
3/4	57/64	3,000
1	1 1/8	4,200
1 1/4	37.5mm	5,400
1 1/2	43.5mm	6,900
2	2 3/16	8,500

Head Marking

