



Formed ends, controlled heat treat; close tolerances; standard for die work; also used as bearings, gages, precision parts, etc.

### Mechanical Properties

Specifications: ANSI B18.8.5M, ISO 8734 or DIN 6325.

Material: ANSI B18.85-alloy steel

Hardness: Rockwell C60 minimum (surface)

Rockwell C 50-58 (core)

Shear Stress: Calculated values based on 1050 MPa.

Surface Finish: 0.2 micrometer maximum

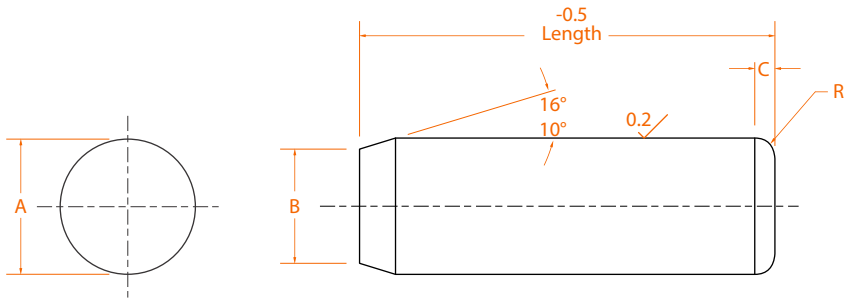
### Application Data

Nominal Size	calculated single shear strength		Recommended hole size	
	kN	lbs	max	min
3	7.4	1,670	3.000	2.987
4	13.2	2,965	4.000	3.987
5	20.6	4,635	5.000	4.987
6	29.7	6,650	6.000	5.987
8	52.5	11,850	8.000	7.987
10	82.5	18,550	10.000	9.987
12	119.0	26,700	12.000	11.985
16	211.0	47,450	16.000	15.985
20	330.0	74,000	20.000	19.983
25	515.0	116,000	25.000	24.983

### Warning

Installation warning: Dowel pins should not be installed by striking or hammering.

Wear safety glasses or shield when pressing chamfered point end first.



### Product Dimensions

Size nom	Pin diameter A		Point diameter B		Crown height C	Crown radius R
	max	min	max	min	max	min
3	3.008	3.003	2.9	2.6	0.8	0.3
4	4.009	4.004	3.9	3.6	0.9	0.4
5	5.009	5.004	4.9	4.6	1.0	0.4
6	6.010	6.004	5.8	5.4	1.1	0.4
8	8.012	8.006	7.8	7.4	1.3	0.5
10	10.012	10.006	9.8	9.4	1.4	0.6
12	12.013	12.007	11.8	11.4	1.6	0.6
16	16.013	16.007	15.8	15.3	1.8	0.8
20	20.014	20.008	19.8	19.3	2.0	0.8
25	25.014	25.008	24.8	24.3	2.3	1.0